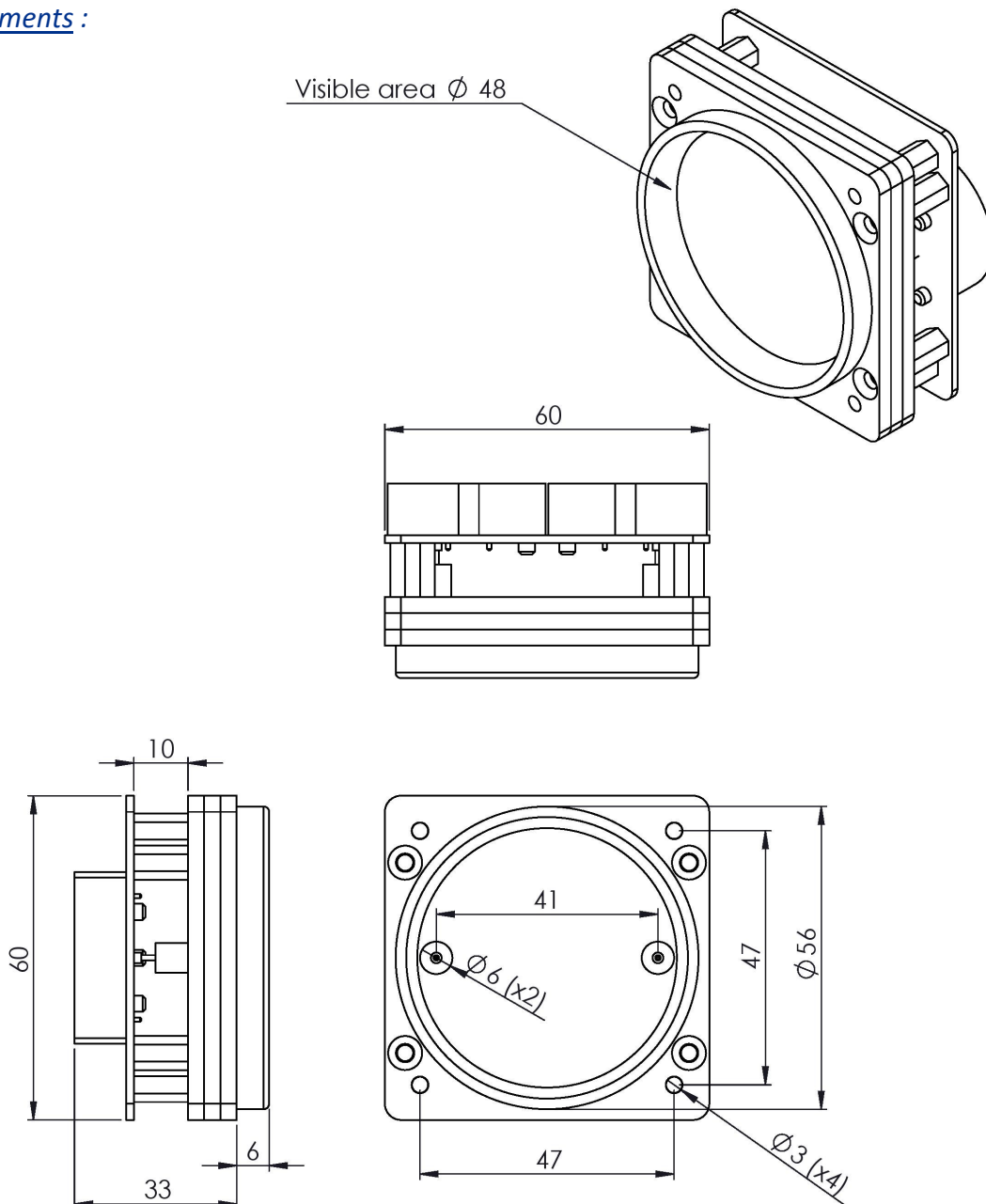


1- Overview

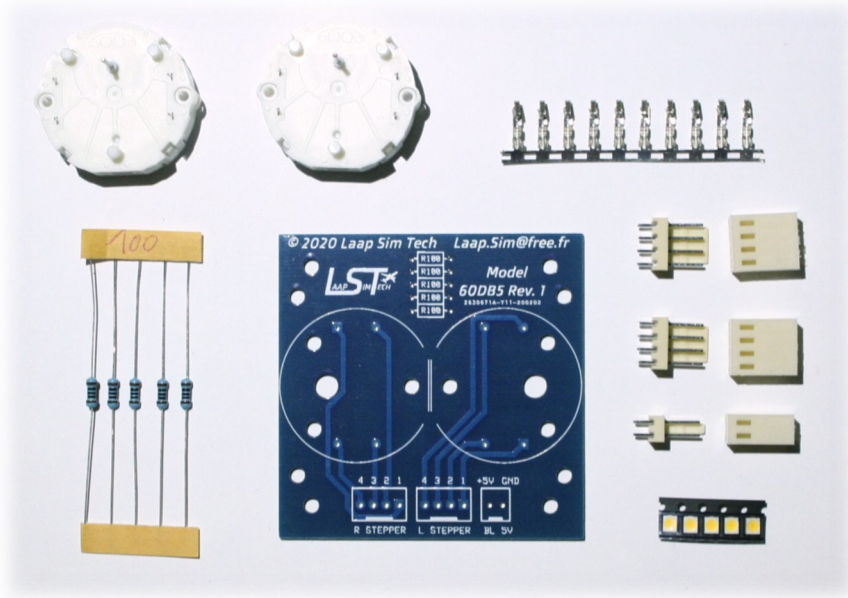
Stepper : Switec X27-589

- Maximum operating speed : 600°/s
- 0,5° per full step
- Angle of rotation with internal stop : 315°
- Operating voltage : 5V to 9V
- Coil resistance (per coil) : 260Ω @ 5V / 290Ω @ 9V

Measurements :



2- Kit content



PCB (x1) & Components set

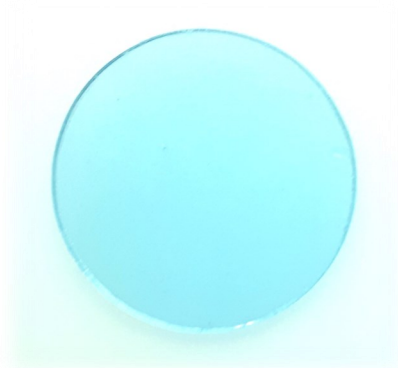
*Differs depending backlight voltage
 Please refer to the PCB assembly manual*



Diffusing PMMA sheet (x1)



Middle plate (x1)



Glass (x1)



Front bezel (x1)

M3x16
 black
 hex screws
 (x4)



M3x10
 hex spacers
 (x8)

M3x14
 countersunk
 screws
 (x4)



M3x6
 screws
 (x8)



Needles
 (x2)

White stickers
 (x2)

3- Gauge assembly

It's recommended to follow these steps in the order of the manual.

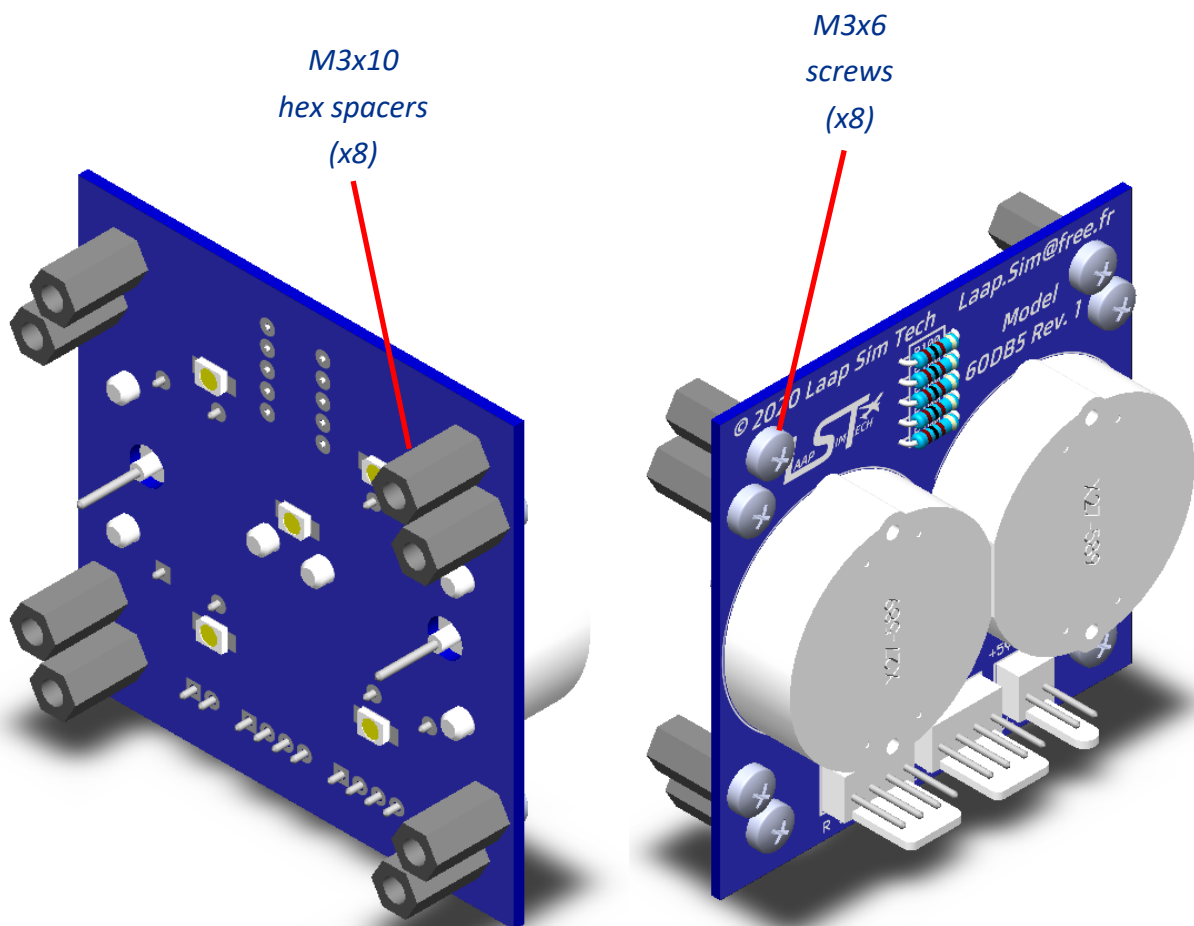
PMMA laser cut parts may have a transparent protection film. Please ensure to remove it on both sides before assembly.

The components must be soldered, please refer to the PCB manual.

3a- Spacers

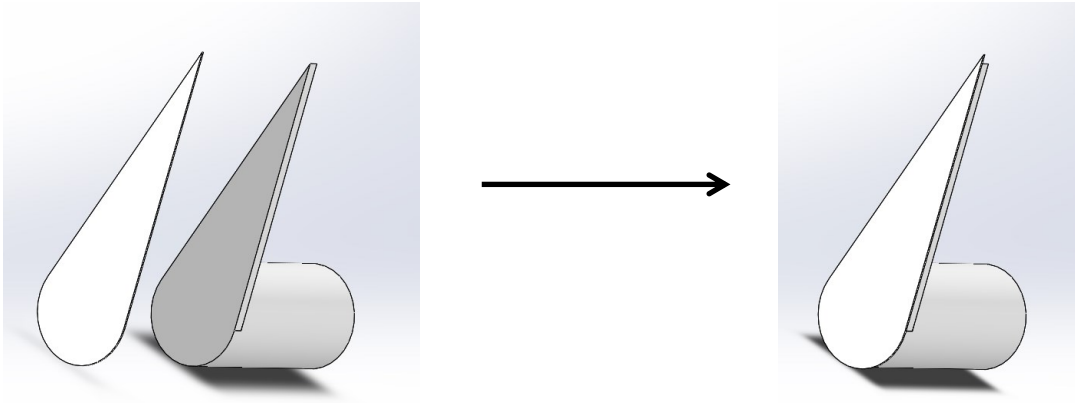
Screw the 8 hex spacers on the PCB using M3x6 screws. Do not overtighten.

Note : *Screws head socket may differ from the picture below.*



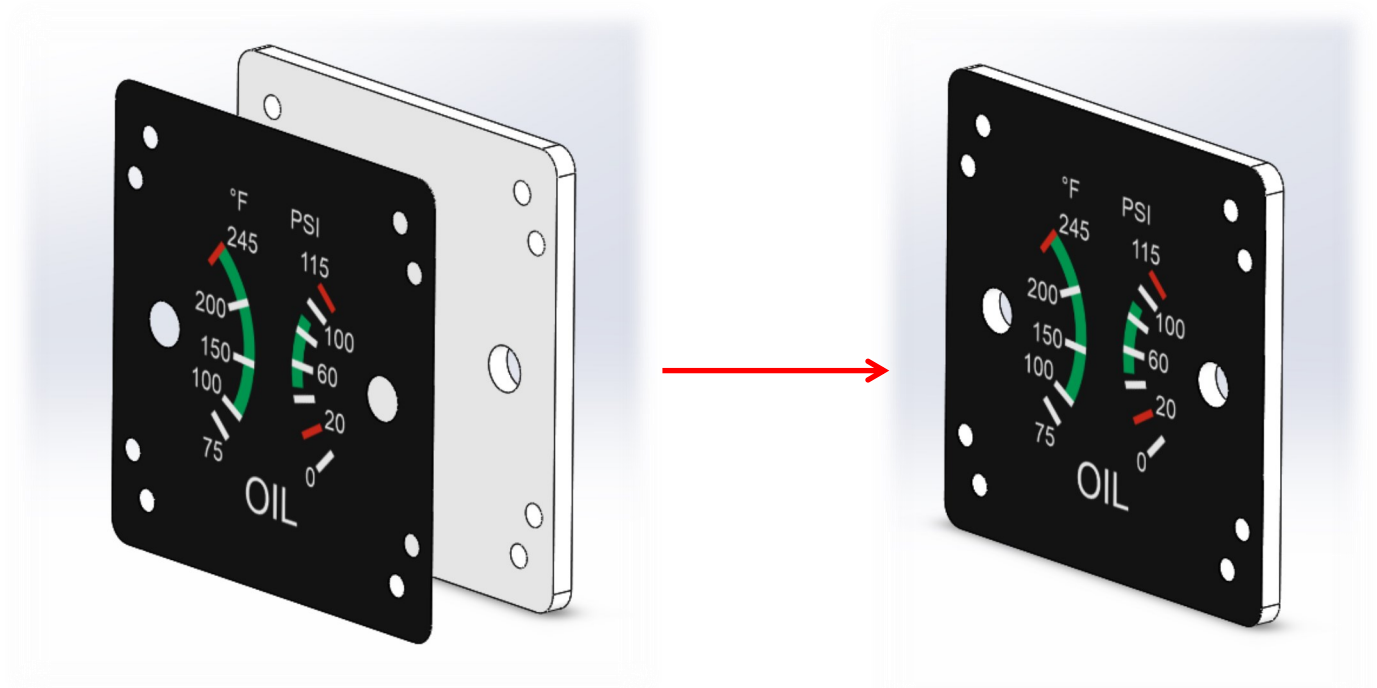
3b- Needle stickers

- Place the white sticker carefully on the needle, and remove the adhesive film.
- Repeat for the second needle.



3c- Printed pattern

If you didn't order the optional pattern, you have to print, glue on diffusing plate and drill it. It's recommended to use a glue spray to keep the pattern as dry as possible.



3d- Final assembly

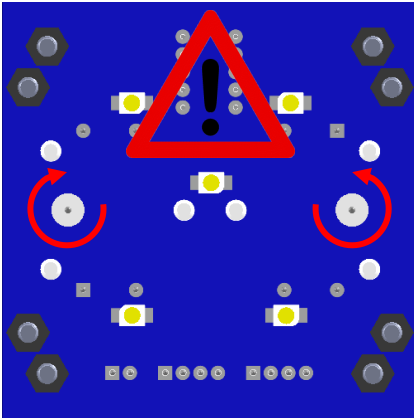
Make sure the left stepper shaft is turned at its rightmost position,
and the right stepper shaft at its leftmost position.

You can now assemble all the parts together, from back to front.

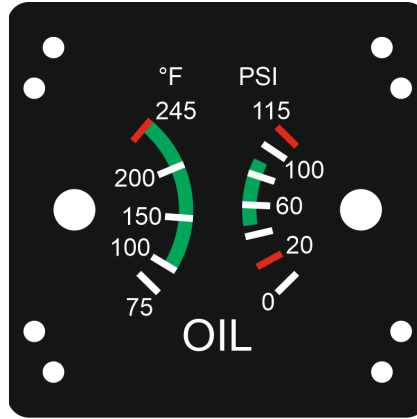
Use the four M3x14 countersunk screws to fix all these parts on the hex spacers.

Note : Screws head socket may differ from the picture below.

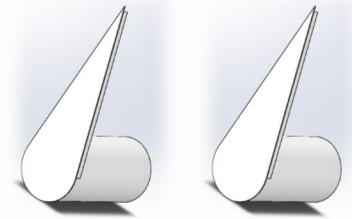
1



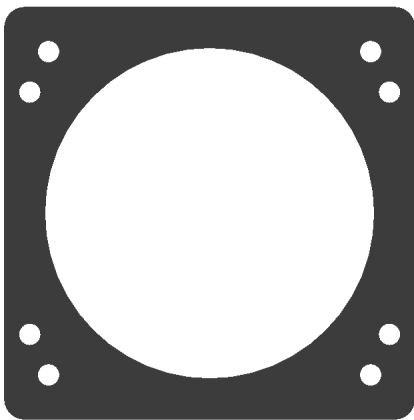
2



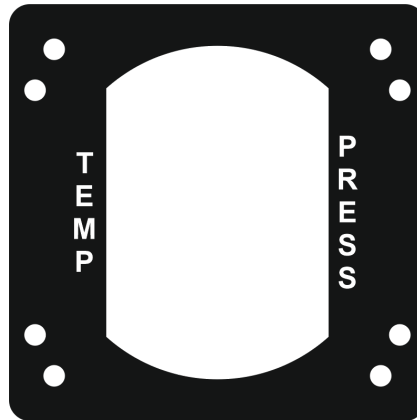
3



4



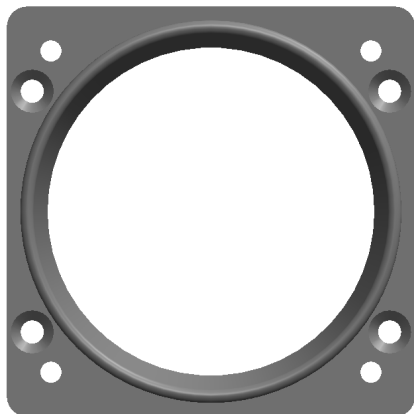
5



6



7

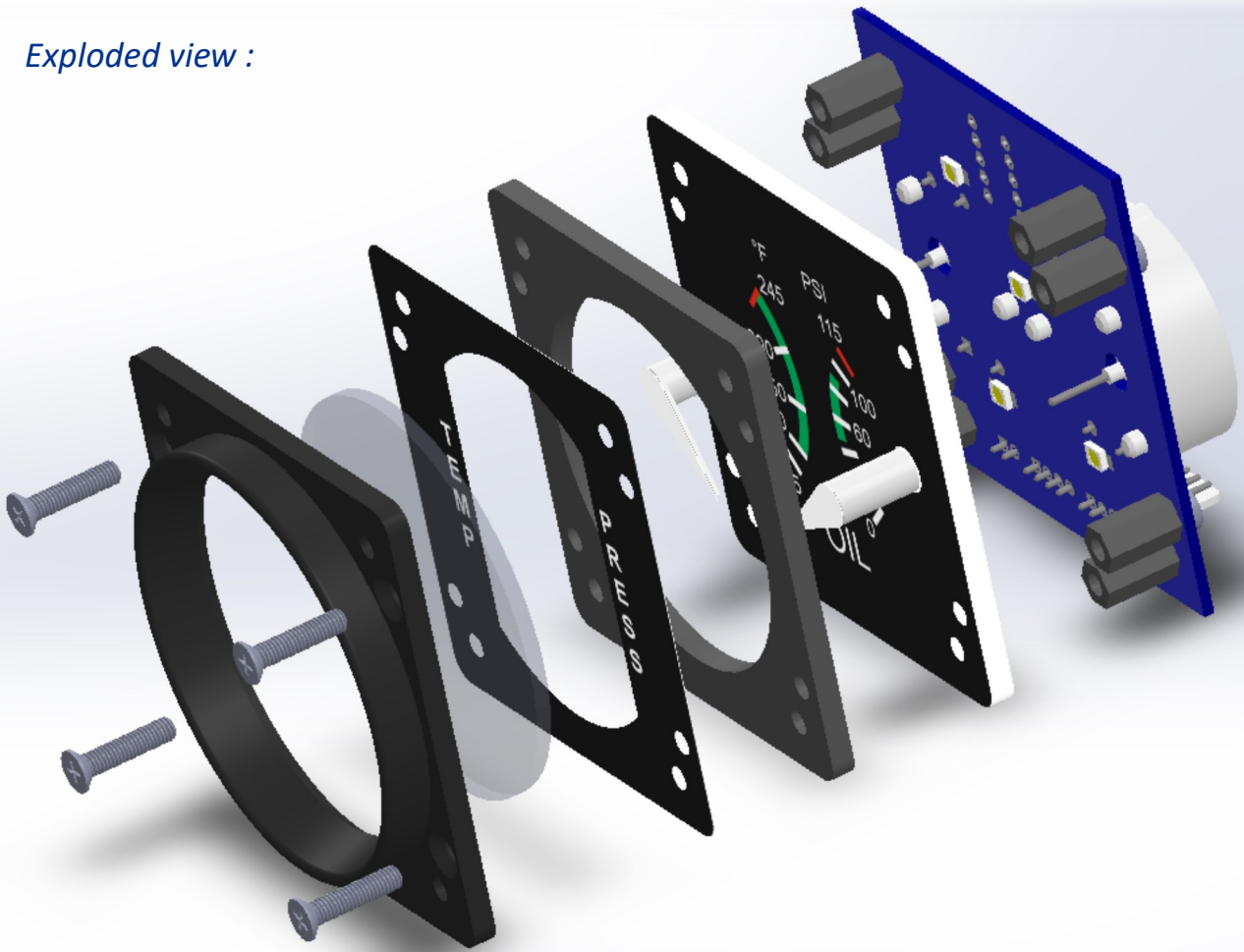


8



M3x14
countersunk screws (x4)

Exploded view :



M3x16 black hex screws are provided to mount the gauge on your own panel.

